

NTM-6857

6" BR/PAR30 Square Reflector

Type _____

Project _____

Catalog No. _____

Notes _____

FEATURES

Trim: 6" die cast aluminum flange provides sharp clean corners. Non-reflective painted finishes and square trim.

Mounting: Trim includes three trim blades that securely mount trim in housing.

COMPATIBLE HOUSINGS

Compatible with line voltage housings. See individual specification sheets for more information.

LAMP

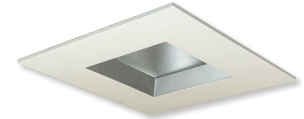
75W BR/PAR30 Maximum (NH-260; NH-270; NHIC-170AT; NHIC-17/100DWQA; NHIC-270AT; NHR-260; NHR-270; NHRIC-170AT; NHRIC-270AT)

LABELS AND LISTINGS

· cULus Listed for Damp Location when used with compatible housing.



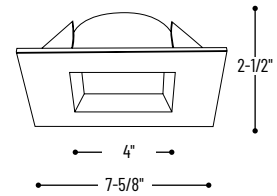
PRODUCT IMAGES AND DIMENSIONS



NTM-6857HZHZ



NTM-6857WW



6" BR/PAR30 Square Reflector

Catalog No.

NTM-6857HZHZ = 6" Square Haze Reflector with White Flange

NTM-6857WW = 6" Square White Reflector with White Flange

Compatible Housings

Catalog No.

NH-260 = Non-IC New Construction / 75W max

NHR-260 = Non-IC Remodel / 75W max

NHIC-17/100DWQA = IC Air-Tight Double Wall New Construction / 75W max

NHIC-170AT = IC Air-Tight New Construction / 75W max

NHRIC-170AT = IC Air-Tight Remodel / 75W max

NH-270 = Shallow Non-IC New Construction / 75W max

NHR-270 = Shallow Non-IC Remodel / 75W max

NHIC-270AT = Shallow IC Air-Tight New Construction / 75W max

NHRIC-270AT = Shallow IC Air-Tight Remodel / 75W max

Example: **NTM-6857WW** = 6" Square White Reflector with White Flange