

NL-601

6" Non-IC Air-Tight Low Voltage New Construction Housing

Source: 50W AR111/PAR36 max.
75W MR16 max.

PRODUCT DESCRIPTION

6" Low voltage housings provide crisp, defined MR16 halogen illumination for any application. Reduced wattage housings are useful in meeting watts per square foot requirements. Housings are available with magnetic or electronic transformers. A wide variety of attractive adjustable trims allow for fine-tuned aiming of directional light sources.

CONSTRUCTION

Plastic Frame: 0.035 steel frame with integral bar hanger brackets. Brackets can accommodate longer 27" accessory flat bar hangers. Shipping screw installed to provide extra security for transformer during shipment - remove before installation.

Housing: 0.035 white baked enamel one-piece drawn steel. Adjustable for ceiling thickness up to 1-3/8".

Minimum Clearance: Non-IC housings require a minimum clearance of 3" from thermal insulation and 1/2" from adjacent building components.

Air Flow Restriction: Housing has factory installed gaskets to restrict airflow from room into ceiling plenum to <2CFM (cubic feet per minute) in accordance with ASTM-283 Air-Tight requirements.

Bar Hangers: Two 13-3/4" to 24-1/2" adjustable bar hangers with captive nails are included on frame. Hanger bars have T-Bar slot and alignment feet. Bar hangers are parallel to junction box, but can be repositioned 90° perpendicular to junction box if desired. "L" Shaped bar hanger foot to align to bottom of construction joist. A T-Bar notch allows easy installation in a suspended ceiling.

Junction Box: Prewired 25 cubic inch 0.060" thick galvanized steel, with seven 1/2" knockouts, four Romex® pryouts, and snap on cover. All leads are #18AWG wire, the ground wire is connected to the bottom, and quick connectors are supplied on all leads. Maximum of 8 no. 12 AWG through branch circuit conductors suitable for at least 90°C permitted in junction box.

ELECTRICAL

Input Voltage: 120V

Output Voltage: 12V

Socket: Bi-Pin GU5.3 socket with heat shield

Wattage: 50W or 75W max (must specify)

Lamp: AR111 or MR16 (not included) Note: LED lamps are compatible with NL-601/1EL

Transformer: Electronic or Magnetic (must specify)

Transformer:

Electronic: Thermally protected, single tap input voltage available in 12V 60Hz with short circuit protection. Approved for use with LED lamps.

Magnetic: Thermally protected, single tap input voltage available in 12V 60Hz. Class H.

COMPATIBLE TRIMS

NL-610W = Adjustable Baffle, White

NL-645 = Adjustable Slot Aperture, White

NL-665W = Surface Round Spot, White

NL-680W = Adjustable Elbow, White

OPTIONAL ACCESSORIES

NRA-126 = One hour Fire Rated Enclosure

NRA-28/0.5IN = 27" Flat Bar Hangers

NRA-36 = Replacement socket with heat shield

LABELS AND LISTINGS

- cULus Listed for Damp Location w/ Feed Through (Wet Location when used with designated trims)
- Meets or exceeds ASTM-283 Air-Tight Requirements



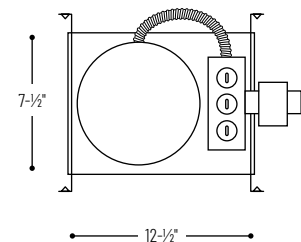
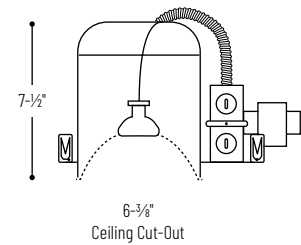
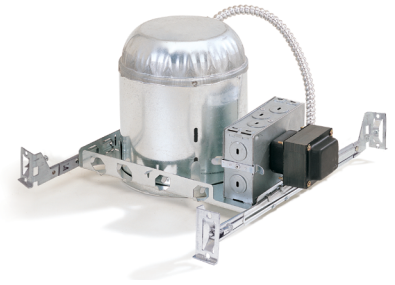
Type

Project

Catalog No.

Notes

PRODUCT IMAGES & DIMENSIONS



6" Non-IC Air-Tight Low Voltage New Construction Housing

Catalog No.

NL-601/1EL = 6" Non-IC Air-Tight Low Voltage New Construction Housing, 120V Electronic, 3W-50W (Compatible with LED lamps)

NL-601/2EL = 6" Non-IC Air-Tight Low Voltage New Construction Housing, 277V Electronic, 50W

NL-601/75/2EL = 6" Non-IC Air-Tight Low Voltage New Construction Housing, 277V Electronic, 75W

NL-6010 = 6" Non-IC Air-Tight Low Voltage New Construction Housing, 120V Magnetic, 50W

Optional Accessories

Catalog No.

NRA-126 = One hour Fire Rated Enclosure

NRA-28/0.5IN = 27" Flat Bar Hangers

NRA-36N = Replacement socket with heat shield

Example: **NL-601/1EL** = 6" Non-IC Air-Tight Low Voltage New Construction Housing, 120V Electronic, 3W-50W (Compatible with LED lamps)