

# NL-4865

## 4" Square Gimbal Trim

Type

Project

Catalog No.

Notes

### FEATURES

**Trim:** Metal trim with adjustable ring can be adjusted up to 43°. Adjustable ring allows lamp to be mounted on top of the trim.

**Mounting:** Trim includes three trim clips that securely mount trim in housing.

### COMPATIBLE HOUSINGS

Compatible with Line Voltage and Low Voltage housings. See individual specification sheets for more information.

### COMPATIBLE LAMP / HOUSINGS

#### Low Voltage:

20W MR16 max. (NL-401QAT/20; NLIC-401QSAT/20; NLR-404QAT/20; NLR-405AT/20; NLIC-402SAT/20; NL-402S/20; NLR-403S/20)

37W MR16 max. (NL-401QAT/37; NLIC-401QSAT/37; NLR-404QAT/37; NLR-405AT/37; NLIC-402QSAT/37; NL-402S/37; NLR-403S/37)

50W MR16 max. (NLIC-401AT/1EL; NLIC-401AT/2EL; NLIC-401QSAT; NL-401AT/1EL; NL-401AT/2EL; NL-401QAT; NLR-404AT/1EL; NLR-404AT/2EL; NLR-404QAT; NLR-405AT; NLIC-402AT/1EL; NLIC-402QSAT; NL-402S/1EL; NL-402S; NLR-403S/1EL; NLR-403S)

75W MR16 max. (NL-401/75/1EL; NL-401/75/2EL; NL-401/75; NLR-404/75/1EL; NLR-404/75/2EL; NLR-404/75)

#### Line Voltage:

20W MR16 max. (NSEIC-407AT/20; NSERIC-407AT/20)

25W MR16 max. (NFBIC-401AT/25A)

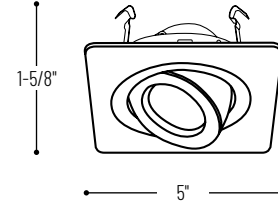
50W MR16 GU10 max. (NSL-401AT/10; NSLIC-401AT/10; NSLR-404AT/10)

### LABELS AND LISTINGS

cULus Listed for Damp Location when used with compatible housing.



### Product Dimensions



### Compatible Housings

Catalog No.

#### Low Voltage

**NLIC-401QSAT/20** = ICAT New Construction / 120V Magnetic / 20W

**NLIC-401QSAT/37** = ICAT New Construction / 120V Magnetic / 37W

**NLIC-401QSAT** = ICAT New Construction / 120V Magnetic / 50W

**NLIC-401AT/1EL** = ICAT New Construction / 120V Electronic / 50W

**NLIC-401AT/2EL** = ICAT New Construction / 120V Electronic / 50W

**NL-401QAT/20** = Non-IC AT New Construction / 120V Magnetic / 20W

**NL-401QAT/37** = Non-IC AT New Construction / 120V Magnetic / 37W

**NL-401QAT** = Non-IC AT New Construction / 120V Magnetic / 50W

**NL-401/75** = Non-IC New Const. / 120V Magnetic / 75W

**NL-401AT/1EL** = Non-IC AT New Construction / 120V Electronic / 50W

**NL-401AT/2EL** = Non-IC AT New Construction / 277V Electronic / 50W

**NL-401/75/1EL** = Non-IC New Construction / 120V Electronic / 75W

**NL-401/75/2EL** = Non-IC New Construction / 277V Electronic / 75W

**NLIC-402QSAT/20** = ICAT Shallow New Construction / 120V Magnetic / 20W

**NLIC-402QSAT/37** = ICAT Shallow New Construction / 120V Magnetic / 37W

**NLIC-402QSAT** = ICAT Shallow New Construction / 120V Magnetic / 50W

**NLIC-402AT/1EL** = ICAT Shallow New Construction / 120V Electronic / 50W

**NL-402S/20** = Non-IC Shallow New Construction / 120V Magnetic / 20W

**NL-402S/37** = Non-IC Shallow New Construction / 120V Magnetic / 37W

**NL-402S** = Non-IC Shallow New Construction / 120V Magnetic / 50W

**NL-402S/1EL** = Non-IC Shallow New Construction / 120V Electronic / 50W

**NLR-403S/20** = Non-IC Shallow Remodel / 120V Magnetic / 20W

**NLR-403S/37** = Non-IC Shallow Remodel / 120V Magnetic / 37W

**NLR-403S** = Non-IC Shallow Remodel / 120V Magnetic / 50W

**NLR-403S/1EL** = Non-IC Shallow Remodel / 120V Electronic / 50W

**NLR-404QAT/20** = Non-IC AT Remodel / 120V Magnetic / 20W

**NLR-404QAT/37** = Non-IC AT Remodel / 120V Magnetic / 37W

**NLR-404QAT** = Non-IC AT Remodel / 120V Magnetic / 50W

**NLR-404/75** = Non-IC Remodel / 120V Magnetic / 75W

**NLR-404AT/1EL** = Non-IC AT Remodel / 120V Electronic / 50W

**NLR-404AT/2EL** = Non-IC AT Remodel / 277V Electronic / 50W

**NLR-404/75/1EL** = Non-IC Remodel / 120V Electronic / 75W

**NLR-404/75/2EL** = Non-IC Remodel / 277V Electronic / 75W

**NLR-405AT/20** = Non-IC AT Remodel / No Transformer / 20W

**NLR-405AT/37** = Non-IC AT Remodel / No Transformer / 37W

**NLR-405AT** = Non-IC AT Remodel / No Transformer / 50W

#### Line Voltage

**NSEIC-407AT/20** = ICAT LED New Construction / 20W

**NSERIC-407AT/20** = ICAT LED Remodel / 20W

**NFBIC-401AT/25A** = Fire Rated IC Air-Tight New Construction / 25W

**NSLIC-401AT/10** = ICAT New Construction / 50W

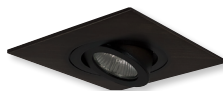
**NSL-401AT/10** = Non-IC Air-Tight New Construction / 50W

**NSLR-404AT/10** = Non-IC Air-Tight Remodel / 50W

### Product Images



**NL-4865B**  
Black Trim



**NL-4865BZ**  
Bronze Trim



**NL-4865N**  
Natural Metal Trim



**NL-4865WW**  
White Trim

### 4" Square Gimbal Trim

Catalog No.

**NL-4865B** = Square Black Trim

**NL-4865BZ** = Square Bronze Trim

**NL-4865N** = Square Natural Metal Trim

**NL-4865WW** = Square White Trim

Example: **NL-4865WW** = 4" Square White Gimbal Trim