

NL-4857

4" Square Reflector with Square Aperture

Type

Project

Catalog No.

Notes

FEATURES

Trim: Die-cast aluminum square flange provides sharp clean corners. Non-reflective painted finishes. Gimbal ring allows lamp to be mounted on top of the trim and adjustable up to 35°.

Mounting: Trim includes three trim clips that securely mount trim in housing.

COMPATIBLE HOUSINGS

Compatible with Line Voltage and Low Voltage housings. See individual specification sheets for more information.

COMPATIBLE LAMP / HOUSINGS

Low Voltage:

20W MR16 max. (NL-401QAT/20; NLIC-401QSAT/20; NLR-404QAT/20; NLR-405AT/20;)
37W MR16 max. (NL-401QAT/37; NLIC-401QSAT/37; NLR-404QAT/37; NLR-405AT/37;)
50W MR16 max. (NLIC-401AT/1EL; NLIC-401AT/2EL; NLIC-401QSAT; NL-401AT/1EL; NL-401AT/2EL; NL-401QAT; NLR-404AT/1EL; NLR-404AT/2EL; NLR-404QAT; NLR-405AT)
75W MR16 max. (NL-401/75/1EL; NL-401/75/2EL; NL-401/75; NLR-404/75/1EL; NLR-404/75/2EL; NLR-404/75)

Line Voltage:

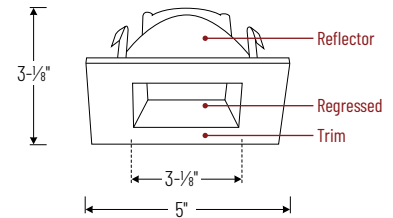
20W MR16 max. (NSEIC-407AT/20; NSERIC-407AT/20)
25W MR16 max. (NFBIC-401AT/25A)
50W MR16 GU10 max. (NSL-401AT/10; NSLIC-401AT/10; NSLR-404AT/10)

LABELS AND LISTINGS

cULus Listed for Damp Location when used with compatible housing.



Product Dimensions



Compatible Housings

Catalog No.

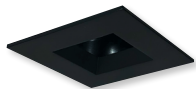
Low Voltage

NLIC-401QSAT/20 = ICAT New Construction / 120V Magnetic / 20W
NLIC-401QSAT/37 = ICAT New Construction / 120V Magnetic / 37W
NLIC-401QSAT = ICAT New Construction / 120V Magnetic / 50W
NLIC-401AT/1EL = ICAT New Construction / 120V Electronic / 50W
NLIC-401AT/2EL = ICAT New Construction / 120V Electronic / 50W
NL-401QAT/20 = Non-IC AT New Construction / 120V Magnetic / 20W
NL-401QAT/37 = Non-IC AT New Construction / 120V Magnetic / 37W
NL-401QAT = Non-IC AT New Construction / 120V Magnetic / 50W
NL-401/75 = Non-IC New Const. / 120V Magnetic / 75W
NL-401AT/1EL = Non-IC AT New Construction / 120V Electronic / 50W
NL-401AT/2EL = Non-IC AT New Construction / 277V Electronic / 50W
NL-401/75/1EL = Non-IC New Construction / 120V Electronic / 75W
NL-401/75/2EL = Non-IC New Construction / 277V Electronic / 75W
NLR-404QAT/20 = Non-IC AT Remodel / 120V Magnetic / 20W
NLR-404QAT/37 = Non-IC AT Remodel / 120V Magnetic / 37W
NLR-404QAT = Non-IC AT Remodel / 120V Magnetic / 50W
NLR-404/75 = Non-IC Remodel / 120V Magnetic / 75W
NLR-404AT/1EL = Non-IC AT Remodel / 120V Electronic / 50W
NLR-404AT/2EL = Non-IC AT Remodel / 277V Electronic / 50W
NLR-404/75/1EL = Non-IC Remodel / 120V Electronic / 75W
NLR-404/75/2EL = Non-IC Remodel / 277V Electronic / 75W
NLR-405AT/20 = Non-IC AT Remodel / No Transformer / 20W
NLR-405AT/37 = Non-IC AT Remodel / No Transformer / 37W
NLR-405AT = Non-IC AT Remodel / No Transformer / 50W

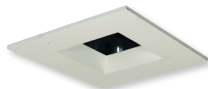
Line Voltage

NSEIC-407AT/20 = ICAT LED New Construction / 20W
NSERIC-407AT/20 = ICAT LED Remodel / 20W
NFBIC-401AT/25A = Fire Rated IC Air-Tight New Construction / 25W
NSLIC-401AT/10 = ICAT New Construction / 50W
NSL-401AT/10 = Non-IC Air-Tight New Construction / 50W
NSLR-404AT/10 = Non-IC Air-Tight Remodel / 50W

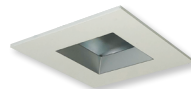
Product Images



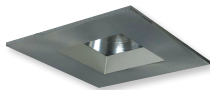
NL-4857BB
Black Reflector
Black Regressed
Black Trim



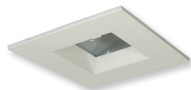
NL-4857BWW
Black Reflector
White Regressed
White Trim



NL-4857HZHW
Haze Reflector
Haze Regressed
White Trim



NL-4857NN
Natural Metal Reflector
Natural Metal Regressed
Natural Metal Trim



NL-4857WW
White Reflector
White Regressed
White Trim

4" Square Reflector with Square Aperture

Catalog No.

NL-4857BB = Black Reflector / Black Regressed / Black Trim
NL-4857BWW = Black Reflector / White Regressed / White Trim
NL-4857HZHW = Haze Reflector / Haze Regressed / White Trim
NL-4857NN = Natural Metal Reflector / Natural Metal Regressed / Natural Metal Trim
NL-4857WW = White Reflector / White Regressed / White Trim

Example: **NL-4857BB** = 4" Square White Trim with Black Regressed, Black Reflector, and Black Trim