

# NL-3410

## 3" Square Baffle with Round Aperture

Type

Project

Catalog No.

Notes

### FEATURES

**Trim:** Precision spun 0.040 aluminum baffle with deep grooves to reduce aperture glare. Non-reflective painted finishes. Gimbal ring allows lamp to be mounted on top of the trim and adjustable up to 35°.

**Mounting:** Trim includes three trim clips that securely mount trim in housing.

### COMPATIBLE HOUSINGS

Compatible with Line Voltage and Low Voltage housings. See individual specification sheets for more information.

### COMPATIBLE LAMP / HOUSINGS

#### Low Voltage:

**Important:** Do not use glass lens (provided) when already using lamp with glass cover  
50W 12V MR16 (NL-301 Series; NLIC-301 Series; NLR-304 Series; NLR-305 Series)

#### Line Voltage:

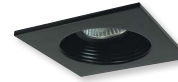
50W 120V MR16 GU10 Max. (NH-350AT; NHIC-350AT; NHR-354AT)

### LABELS AND LISTINGS

cULus Listed for Damp Location when used with compatible housing.



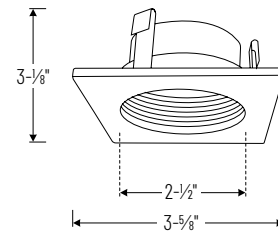
### Product Images and Dimensions



**NL-3410BB**  
Black Baffle  
Black Trim



**NL-3410WW**  
White Baffle  
White Trim



## 3" Square Baffle with Round Aperture

Catalog No.

**NL-3410BB** = Black Baffle / Black Trim

**NL-3410WW** = White Baffle / White Trim

## Compatible Housings

### Line Voltage

Catalog No.

**NH-350AT** = 3" Non-IC Air-Tight New Construction Housing / 50W max.

**NHIC-350AT** = 3" IC Air-Tight New Construction Housing / 50W max.

**NHR-354AT** = 3" Non-IC Air-Tight Remodel Housing / 50W max.

### Low Voltage

Catalog No.

**NLIC-301AT/1EL** = 3" IC Air-Tight New Construction Housing / 50W max.

**NLIC-3010AT/20** = 3" IC Air-Tight New Construction Housing / 20W max.

**NLIC-3010AT/37** = 3" IC Air-Tight New Construction Housing / 37W max.

**NLIC-3010AT** = 3" IC Air-Tight New Construction Housing / 50W max.

**NL-301AT/1EL** = 3" Non-IC Air-Tight New Const. Housing / 50W max.

**NL-3010AT/20** = 3" Non-IC Air-Tight New Const. Housing / 20W max.

**NL-3010AT/37** = 3" Non-IC Air-Tight New Const. Housing / 37W max.

**NL-3010AT** = 3" Non-IC Air-Tight New Const. Housing / 50W max.

**NLR-304AT/1EL** = 3" Non-IC Air-Tight Remodel Housing / 50W max.

**NLR-3040AT/20** = 3" Non-IC Air-Tight Remodel Housing / 20W max.

**NLR-3040AT/37** = 3" Non-IC Air-Tight Remodel Housing / 37W max.

**NLR-3040AT** = 3" Non-IC Air-Tight Remodel Housing / 50W max.

**NLR-305AT/20** = 3" Non-IC Air-Tight Remodel Housing / 20W max.

**NLR-305AT/37** = 3" Non-IC Air-Tight Remodel Housing / 37W max.

**NLR-305AT** = 3" Non-IC Air-Tight Remodel Housing / 50W max.

Example: **NL-3410WW** = 3" Square Baffle with Round Aperture, White Baffle / White Trim